

Sommario

First Installation of RosettaCNC	3
THE SOFTWARE	3
CONNECTING TO THE BOARD	3
Method 1: Direct Connection to the Board	3
Method 2: Connecting the Board to the Company/Home Network	4
ROSETTACNC SOFTWARE	5
ROSETTACNC FIRMWARE UPDATE	6

First Installation of RosettaCNC

Below are the initial steps to establish a first connection with the RosettaCNC board.

THE SOFTWARE

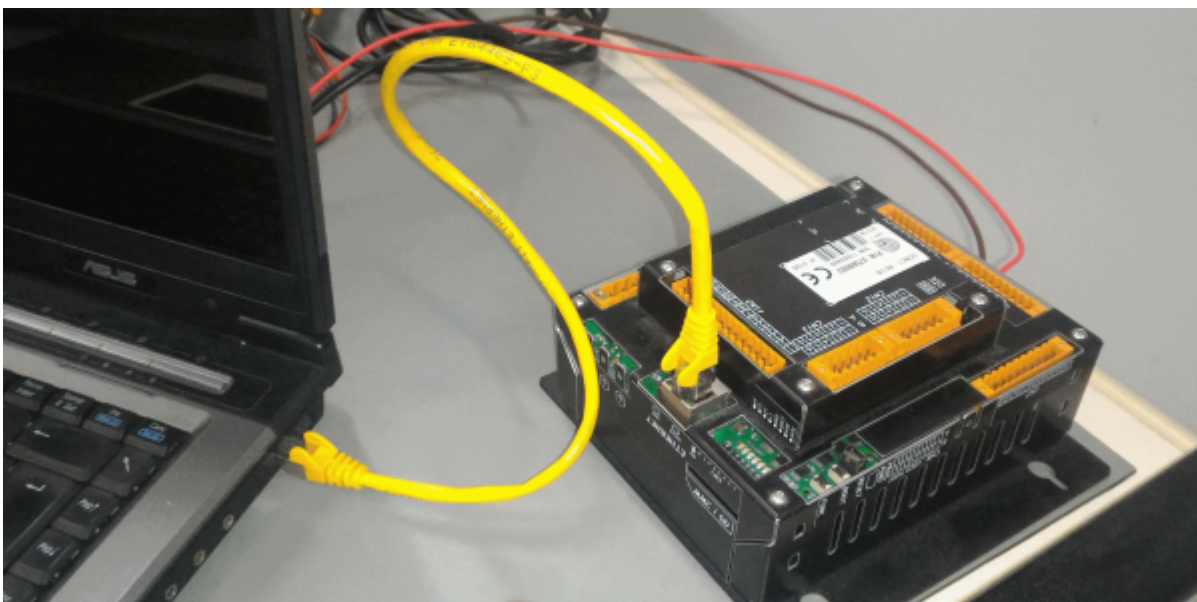
Download and install the latest version of **RosettaCNC Software** from the [Download](#) section of the website.

CONNECTING TO THE BOARD

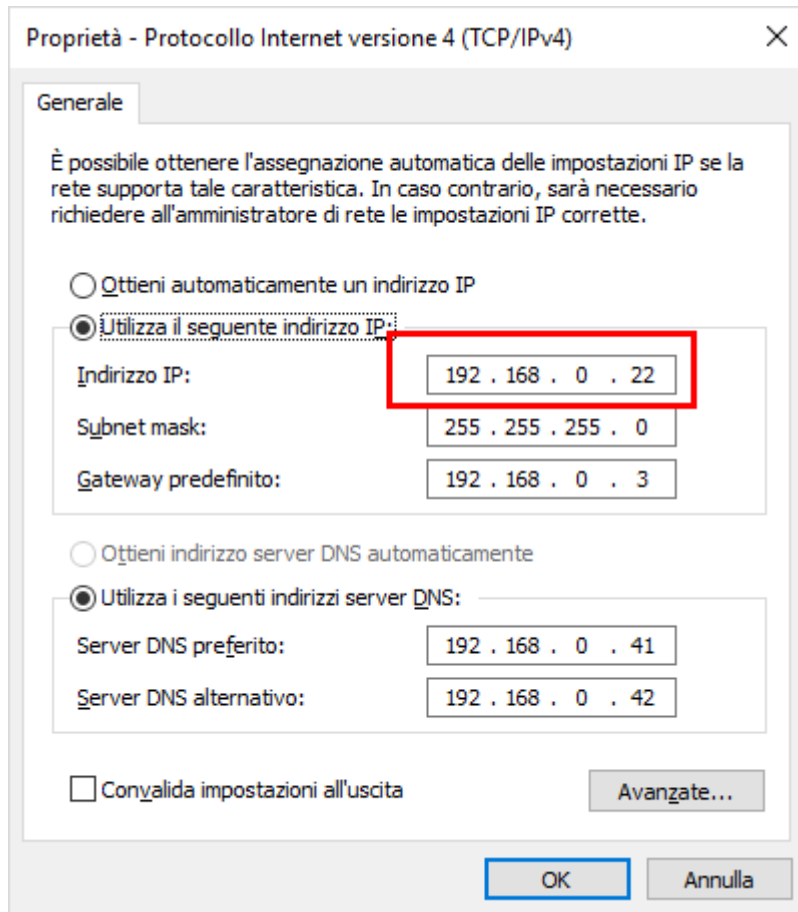
To connect to the board, there are two options:

1. **Direct connection** via Ethernet to the board
2. **Connection** of the board to the **Company/Home Network**

Method 1: Direct Connection to the Board



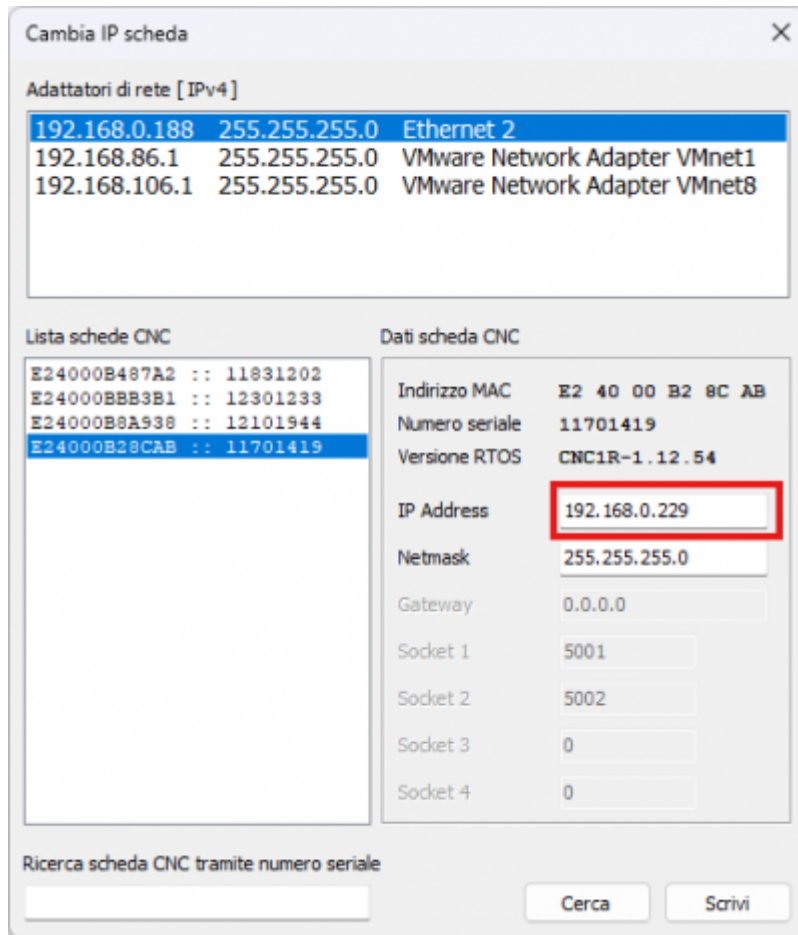
1. Connect an Ethernet cable between the PC and the RosettaCNC board.
2. Disable unused network adapters and leave only the one used for the Ethernet connection enabled (Optional but recommended):
 1. Open the Windows Control Panel.
 2. Click on Network and Sharing Center, then Change adapter settings.
 3. In this panel, right-click on the unused adapters and select Disable.
 4. Note that this operation is not strictly necessary but helps prevent potential IP address conflicts.
3. Open the Windows Control Panel again, click on Network and Sharing Center, then Change adapter settings. Right-click on the network adapter used for the RosettaCNC connection, select Properties, then choose Internet Protocol Version 4 (TCP/IPv4), and click Properties. A window will open where you need to set an IP address for the PC's network adapter to 192.168.0.x, where x is a number between 2 and 252. In the following example, 22 has been chosen.



Congratulations! You have successfully set up the connection with the board. You can proceed to the next chapter, [ROSETTACNC SOFTWARE](#).

Method 2: Connecting the Board to the Company/Home Network

1. Connect an Ethernet cable between the RosettaCNC board and an Ethernet port on your network (modem, switch, etc.).
2. Start the **RosettaCNC Software**.
3. Go to Settings, then Change Board IP. Select the network adapter you are connected to, then click Search, Confirm, and find the IP address assigned to the RosettaCNC board.

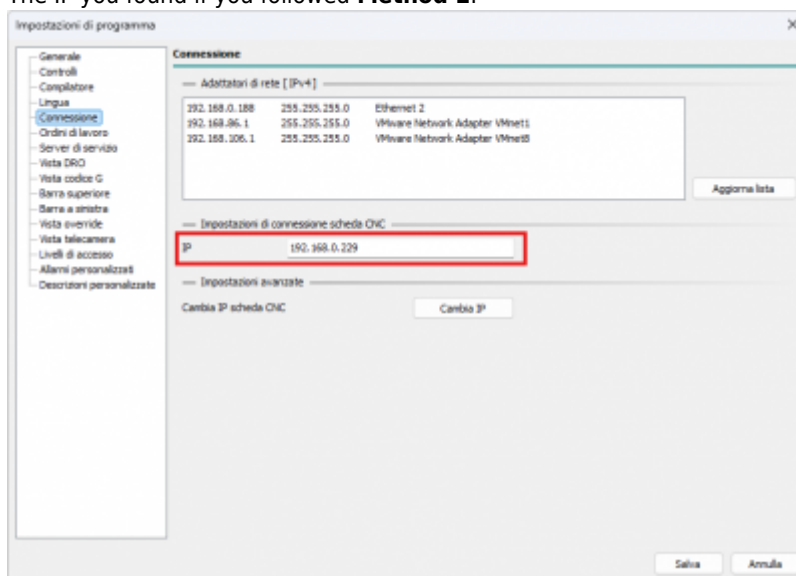


Congratulations! You have successfully set up the connection with the board. You can proceed to the next chapter, [ROSETTACNC SOFTWARE](#).

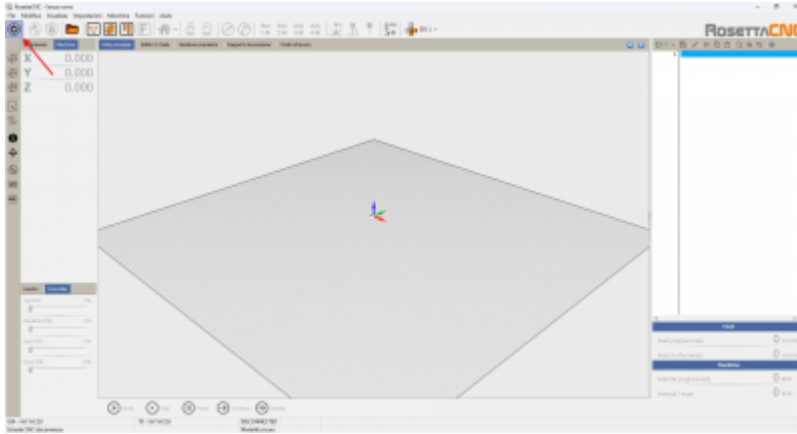
ROSETTACNC SOFTWARE

Now that you have found the IP of the RosettaCNC board, you can proceed with the **first connection**.

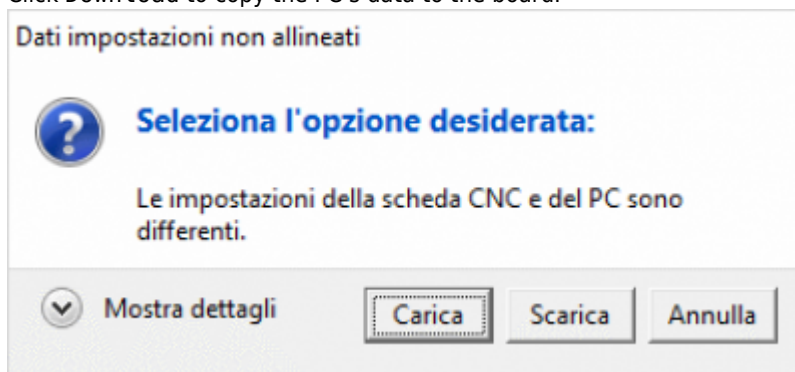
1. Start the **RosettaCNC Software**.
2. Go to Settings, then Program Settings. In the Connection section, enter the board's IP, then click Save.
 1. 192.168.0.253 if you followed **Method 1**.
 2. The IP you found if you followed **Method 2**.



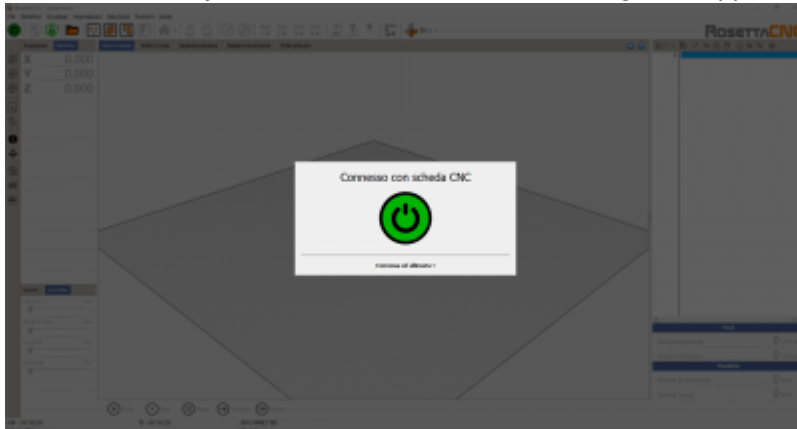
3. Then return to the homepage and click on the connection logo in the top left.



4. During the first connection, a dialog window may appear with the message Setting data not aligned.
1. Click Load to copy the board's data to the PC.
 2. Click DownLoad to copy the PC's data to the board.



5. Once successfully connected to the board, a message will appear: Connected to CNC board.

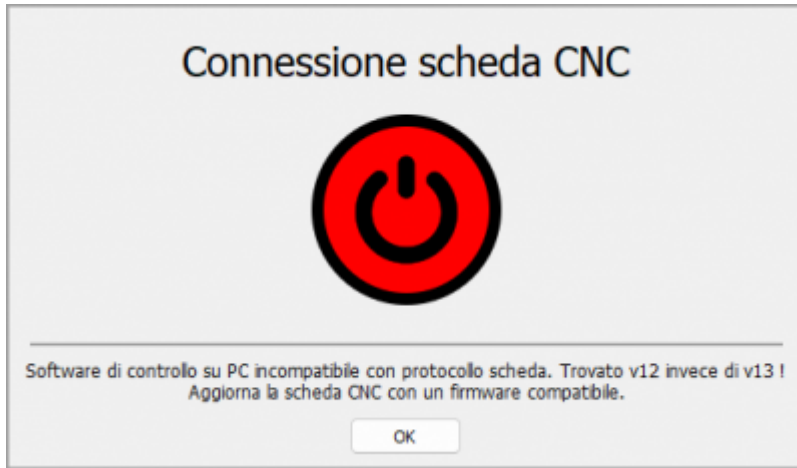


Congratulations! You have successfully set up the **RosettaCNC Software** and the connection with the board. You can now **USE THE BOARD!**

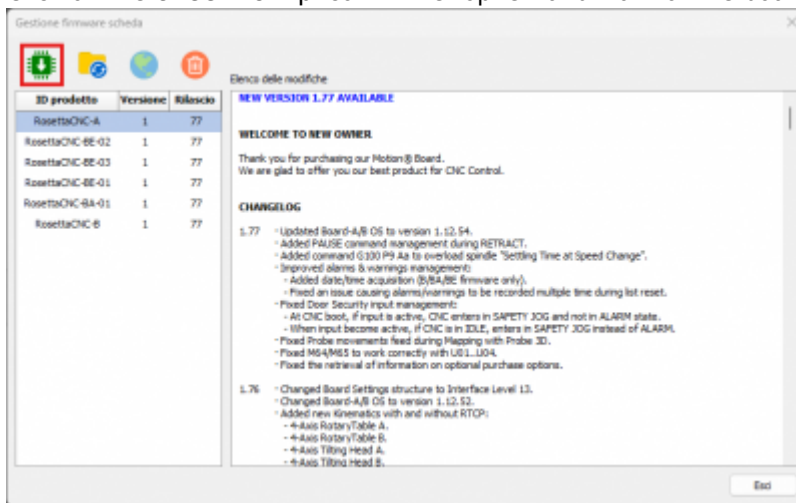
ROSETTACNC FIRMWARE UPDATE

During the connection, the message PC control software incompatible with board protocol may appear.

In this case, a **Firmware Update** of the **RosettaCNC Board** is required.



1. Click on Settings, then Board Firmware Management, and select the type of board you have from the list.
2. Click on the Green Chip icon in the top left and wait for the board update to complete.



3. Once updated, you can connect.

Automatically generated document from **RosettaCNC Wiki** - <https://wiki.rosettacnc.com/>

The wiki content is constantly updated by the RosettaCNC development team, so the online version may contain more recent information.